

Worktops, splashbacks
and upstands exclusively
manufactured by

BB
BUSHBOARD



BB odyssey

contract design

BB odyssey

Design	Texture	3000 X 600mm		3000 X 900mm breakfast bar		3000 X 600mm		3000 X 900mm breakfast bar		3000 x 600 x 8mm midway		1500 x 1200 x 8mm hob panel		3000 x 100 x 20mm upstand	
		28mm		38mm		splashback		upstand							
HiGloss															
B066	Baltic Granite	Gloss			•	•	•	•	•	•	•	•	•	•	•
B039	Black Alaska	Gloss			•	•	•	•	•	•	•	•	•	•	•
K002	Kota	Gloss			•	•	•	•	•	•	•	•	•	•	•
L032	Lima	Gloss			•	•	•	•	•	•	•	•	•	•	•
L003	Midnight	Gloss			•	•	•	•	•	•	•	•	•	•	•
P065	Puno	Gloss			•	•	•	•	•	•	•	•	•	•	•
Surf and Fa															
A017	Antique Blocked Walnut	Fa			•	•	•	•	•	•	•	•	•	•	•
A024	Aticos Gold	Surf			•	•	•	•	•	•	•	•	•	•	•
A078	Aztec Granite	Surf			•	•	•	•	•	•	•	•	•	•	•
B056	Bahia Beige	Surf	•	•	•	•	•	•	•	•	•	•	•	•	•
B066	Baltic Granite	Surf			•	•	•	•	•	•	•	•	•	•	•
H018	Beech Normand	Fa	•	•	•	•	•	•	•	•	•	•	•	•	•
G046	Beige Granite	Surf	•	•	•	•	•	•	•	•	•	•	•	•	•
B039	Black Alaska	Surf			•	•	•	•	•	•	•	•	•	•	•
B070	Blanc Megeve	Surf	•	•	•	•	•	•	•	•	•	•	•	•	•
B050	Butcher Block Medium	Fa	•	•	•	•	•	•	•	•	•	•	•	•	•
C080	Cap Horn	Surf			•	•	•	•	•	•	•	•	•	•	•
C012	Carthage	Surf	•	•	•	•	•	•	•	•	•	•	•	•	•
C030	Cosmic Beige	Surf	•	•	•	•	•	•	•	•	•	•	•	•	•
C037	Crystal	Fa			•	•	•	•	•	•	•	•	•	•	•
D017	Dakota	Surf	•	•	•	•	•	•	•	•	•	•	•	•	•
D020	Dolmen	Surf			•	•	•	•	•	•	•	•	•	•	•
E046	Etna Verde	Surf	•	•	•	•	•	•	•	•	•	•	•	•	•
G011	Granito Fonce	Surf			•	•	•	•	•	•	•	•	•	•	•
149	Gris Paloma	Fa	•	•	•	•	•	•	•	•	•	•	•	•	•
I010	Iquitos Noir	Fa			•	•	•	•	•	•	•	•	•	•	•
K050	Kashmir Gold	Surf			•	•	•	•	•	•	•	•	•	•	•
K002	Kota	Surf			•	•	•	•	•	•	•	•	•	•	•
L011	Light Blocked Walnut	Fa			•	•	•	•	•	•	•	•	•	•	•
L032	Lima	Surf	•	•	•	•	•	•	•	•	•	•	•	•	•
M001	Maryland Clair	Surf	•	•	•	•	•	•	•	•	•	•	•	•	•
M003	Maryland Fonce	Surf	•	•	•	•	•	•	•	•	•	•	•	•	•
L003	Midnight	Surf			•	•	•	•	•	•	•	•	•	•	•
N023	Nova Saphir	Surf			•	•	•	•	•	•	•	•	•	•	•
O063	Opus Coral	Surf	•	•	•	•	•	•	•	•	•	•	•	•	•
P065	Puno	Surf			•	•	•	•	•	•	•	•	•	•	•
S065	Solok	Surf			•	•	•	•	•	•	•	•	•	•	•
H030	Steamed Beech	Fa	•	•	•	•	•	•	•	•	•	•	•	•	•
T028	Texas Brun	Fa			•	•	•	•	•	•	•	•	•	•	•
V002	Venise	Surf			•	•	•	•	•	•	•	•	•	•	•
Metallic splashbacks															
A008	Brushed Aluminium	Metal					•	•			•	•			
S030	Strass Blanc	Gloss					•	•			•	•			
S033	Strass Noir	Gloss					•	•			•	•			

All worksurfaces come with a full length edging strip and care leaflet.



Baltic Granite HiGloss WUS



Kota HiGloss WUS



Puno HiGloss WUS



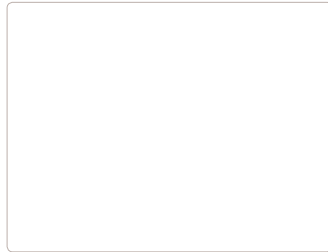
Black Alaska HiGloss WUS



Lima HiGloss WUS



Midnight HiGloss WUS



Blanc Megeve Surf WU



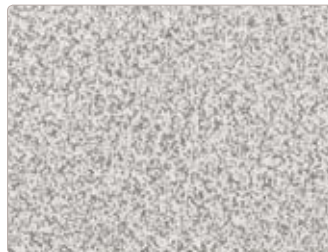
Gris Paloma Fa W



Carthage Surf WU



Crystal Fa WU



Maryland Clair Surf W



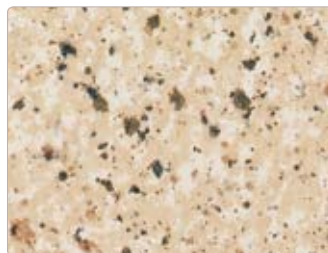
Bahia Beige Surf WU



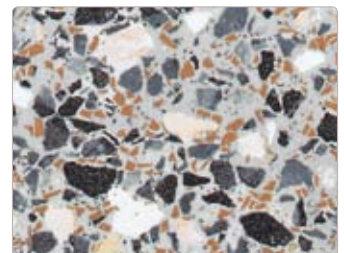
Cosmic Beige Surf W



Aticos Gold Surf WU



Opus Coral Surf W



Granito Fonce Surf W



Beige Granite Surf WU



Dolmen Surf W



Aztec Granite Surf WU



Kota Surf WUS



Kashmir Gold Surf WU



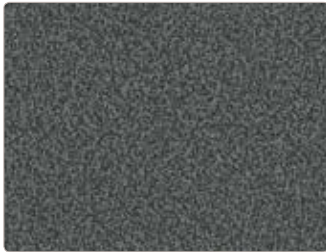
Baltic Granite Surf WUS



Venise Surf W



Etna Verde Surf W



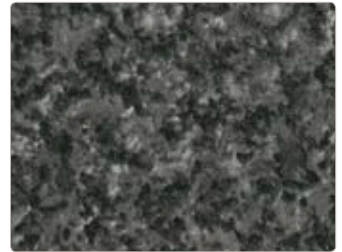
Maryland Fonce Surf WU



Nova Saphir Surf W



Cap Horn Surf W



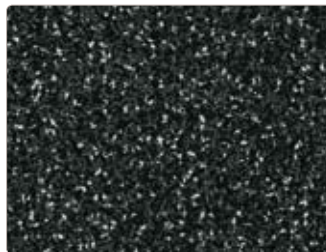
Dakota Surf WU



Puno Surf WUS



Solok Surf WUS



Iquitos Noir Fa WU



Black Alaska Surf WUS



Lima Surf WUS



Midnight Surf WUS



Beech Normand Fa WU



Steamed Beech Fa W



Butcher Block Medium Fa WU



Texas Brun Fa WU



Light Blocked Walnut Fa WU



Antique Blocked Walnut Fa WUS



Brushed Aluminium Metal S



Strass Blanc HiGloss S



Strass Noir HiGloss S

W = worksurface
U = upstand
S = splashback

Call for samples
Tel **01933 232 242**
Fax 01933 232 286
Email: samples@bushboard.co.uk
www.bushboard.co.uk

made to last

Quality

Manufacturing with the finest materials is what gives Bushboard worksurfaces their signature quality compared to competitive products. While beautiful and stylish to look at, they are also constructed to cope with the wear and tear of everyday living.

Using Polyrey laminate and independently tested to BS/EN438, your Bushboard worksurface is designed to withstand knocks, abrasions, chemicals, cigarette burns, steam, stains from juice, tea, wine or coffee. It is also highly resistant to heat, although we recommend the use of a protective pad as saucepan bottoms can become extremely hot.

Gloss texture

Gloss texture and some darker designs need a little more care and attention than the surf and Fa finishes. Polyrey's gloss technology offers an advanced level of protection against scuffing, but don't forget this is a fashionable finish that can mark and scratch more easily with everyday use.

5 year guarantee

Polyrey Odyssey worksurfaces (except gloss) are guaranteed for 5 years. Bushboard will make good by repair and/or replacement (at its discretion) any Odyssey product of its manufacture which can be shown to have failed by reason of defects in its manufacture, that is subject to wear and tear, provided the product has been installed and used in accordance with the manufacturer's instructions and that the products are used for their intended purpose / application. Proof of date and place of purchase required. This guarantee is in addition to your statutory rights as a consumer and does not affect your rights in any way.

Care & Maintenance

Bushboard worksurfaces are so easy to maintain. Unlike other worksurface materials such as timber, composites or granites, they require no regular maintenance or repair. All you need to do

is wipe the Polyrey laminate surface with a moist cloth and your favourite mild detergent. For more stubborn marks such as fruit juice or coffee, leave the detergent to soak on the surface for a little while before rinsing thoroughly. Obviously, your worksurface can become damaged if mistreated, so we recommend some sensible measures like placing hot pans or casserole dishes on protective mats and mopping up spills quickly. Full details can be found in our care & maintenance leaflet. One of these is included with every worktop purchased but if you need a copy please call our Customer Service Team or log onto our website.

Splashbacks

Splashbacks should always be installed at least 130mm from a hob or heat source. Please call us for our Installation Guide or visit www.bushboard.co.uk



PEFC

Certificate No. - BMT-PEFC-0338

PEFC/16-37-247

Bushboard is independently accredited for PEFC to provide surety for 'chain of custody'. This underpins our commitment to using only material with the PEFC

or FSC certification, guaranteeing that it comes from properly environmentally managed and sustainable sources.

In the kitchen industry, we are proactive in encouraging smarter use of 3m and 4.1m worksurfaces to minimise waste. For full availability of complementary 4.1 metre designs see the Omega range brochure.

In the last 12 months alone continued investment in process technology has reduced waste by 720 tonnes. We bale and recycle all our paper, cardboard and plastic and a further 300 tonnes of sawdust is burned to efficiently heat our factory.

We have an exemplary record in Health & Safety. Over the last two decades we have received consistent recognition from the industry-recognised RoSPA (Royal Society for the Prevention of Accidents) and BSC (British Safety Council) gaining many awards in the process.



PEFC/16-37-247

BB
BUSHBOARD