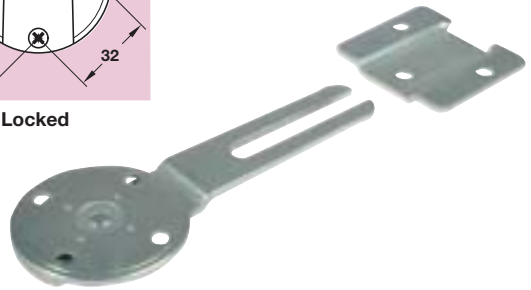


Pivoted under table when not needed

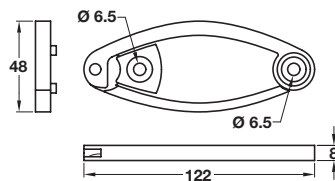


A Table connector

- Comprises:
 - 1 x snap-in part
 - 1 x counterplate
- Screw fixing
- Snaps together under light pressure without any tools
- Just pull to separate
- Snap-in part can be pivoted by 360°, lock position every 90°
- Pivot under table when not needed
- Steel

| Finish | Cat. No. |
|------------|------------|
| Galvanized | 642.42.900 |

Order qty: 1 pc



B Table link it connector

- Black plastic

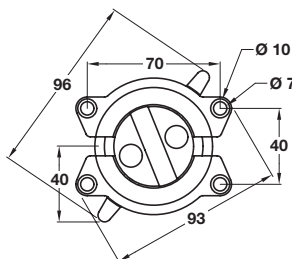
| | |
|----------|------------|
| Cat. No. | 642.43.310 |
|----------|------------|

Order qty: 1 pc

C Bench-type connector

- Universal
- Can be connected to any single plate-top to another without bothering about what is mounted under the table
- Easy to mount
- No loose parts
- Catch positions for assembling interlinking tops and for transport
- Nickel-plated zinc alloy
- 2 pcs = 1 complete set

Item B.
Text added



| | |
|----------|------------|
| Cat. No. | 642.42.910 |
|----------|------------|

Order qty: Multiples of 2 pcs

We reserve the right to alter specifications without notice.

Dimensions in mm